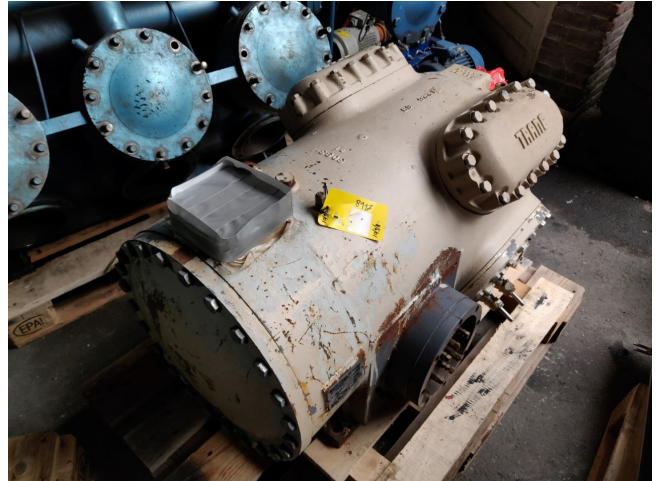


# Trane L2E5F41N

## Specifications

Hersteller	Trane
Typ	L2E5F41N
Kältemittel	Freon
Bemerkungen	R404a - R22 or other freon types
Größe	1010x620x690 mm (LxWxH)
Stock	2



## Description

### Used Trane L2E5F41N

Gebrauchte Trane L2E5F41N  
(G0C04G4164) // 380V / 50Hz / 3 ~ //  
F.L. aktuell wassergekühlt: 70 /  
Luftgekühlt: 75

